

OUR MISSION

Disrupt intergenerational cycles of trauma and adverse experiences by supporting community-based collaboration between partners that will achieve positive outcomes in health and education for all children.

The Oregon Health and Education Collaborative works with partners in healthcare, education, human services and community based organizations and leaders, to support them in fostering a networked and culturally-responsive approach, helping them prevent and overcome adverse experiences and the effects of trauma.

The First 1000 Days Upstream Initiative



Identify & support four community-based design pilots to co-create the blueprint for a Child Success Model.



Create a learning collaborative to elevate and amplify the work of the design pilots.

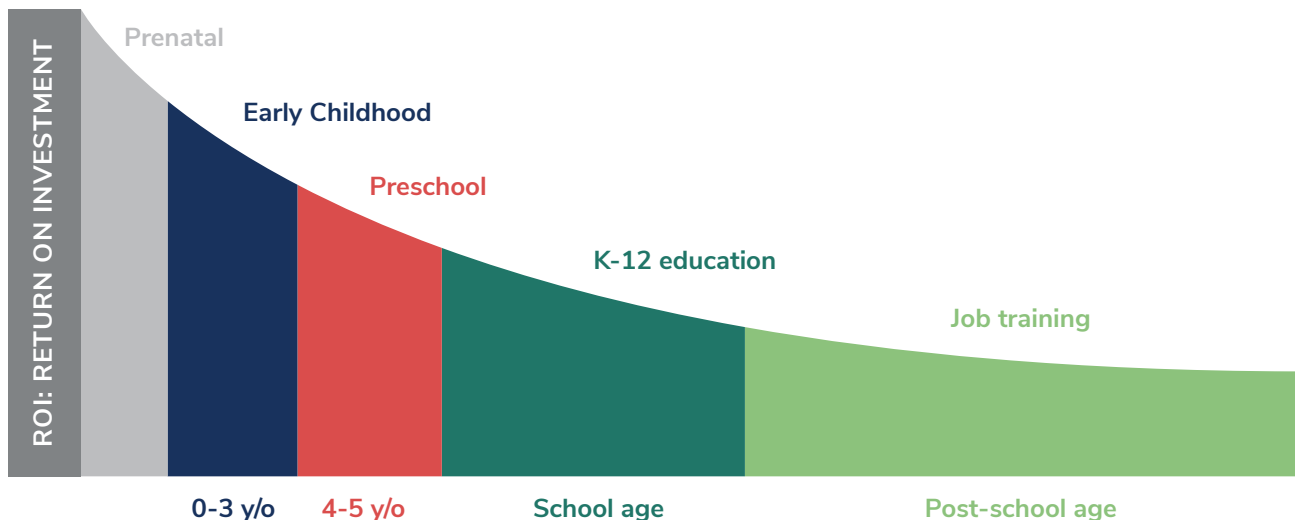


Use the design pilots and learning collaborative for legislative proposals to begin to scale the Child Success Model across the state.

The first 1000 days of a child's life sets the foundation for all the years to come. OHEC's First 1000 Days Initiative strategically focuses on the most critical time of a child's development to change their outcomes for life.

The ROI on early investments from pregnancy to 1000 days is 13%

The Heckman Curve shows the economic benefits of investing early and building skills to provide greater success to more children, greater productivity to their families, and a reduction in social spending for society.*



*James. J Heckman is the Henry Schultz Distinguished Service Professor of Economics at the University of Chicago, a Nobel Memorial Prize Winner in Economics and an expert in the economics of human development (heckmanequation.org).

The Collaborative: Building A Movement

There are many dedicated and innovative programs in Oregon that are working to help children and families succeed. Yet, gaps in education and health outcomes continue to widen. In partnership with the agencies and organizations that provide critical services, the Collaborative will support a re-imagining of how programs interface to deliver care.

CURRENT CASE STUDY

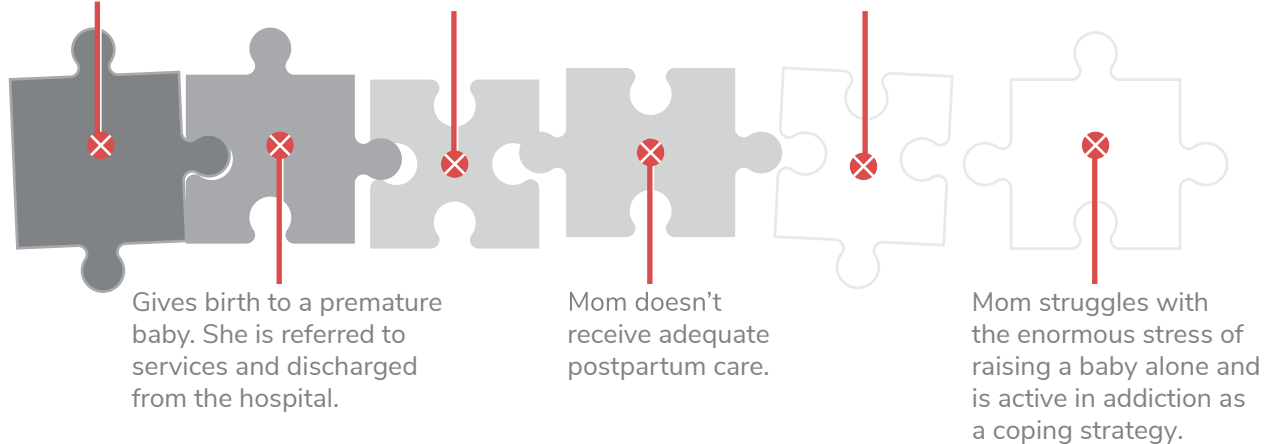
Many resources exist, but the process of finding them remains fractured and broken.

20 year old pregnant woman in addiction recovery

Mom-to-be struggles with housing insecurity and is forced to move during her pregnancy to find more affordable rent.

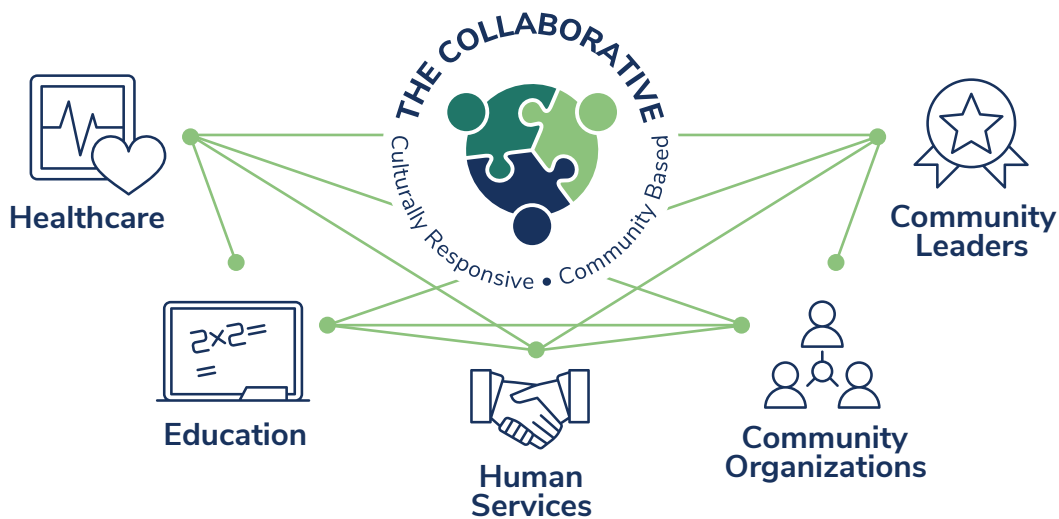
Mother receives initial services, but struggles to make appointments due to transportation issues.

Mother has to rely on neighbors to watch her baby so she can work.



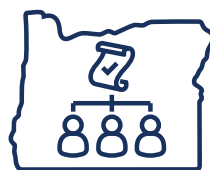
FIRST 1000 DAYS UPSTREAM INITIATIVE

Builds community among leaders to collaborate on solutions and generate **Child Success Models**.



CO-CREATE:

Four design pilots and parallel learning collaborative co-create the blueprint for a Child Success Model.



SCALE STATEWIDE:

The design pilots and learning collaborative serve as basis for legislative proposal to begin to scale the Child Success Model statewide.



OUTCOME:

Disrupt intergenerational cycles of adverse experiences and yield positive outcomes in health and education for all children.